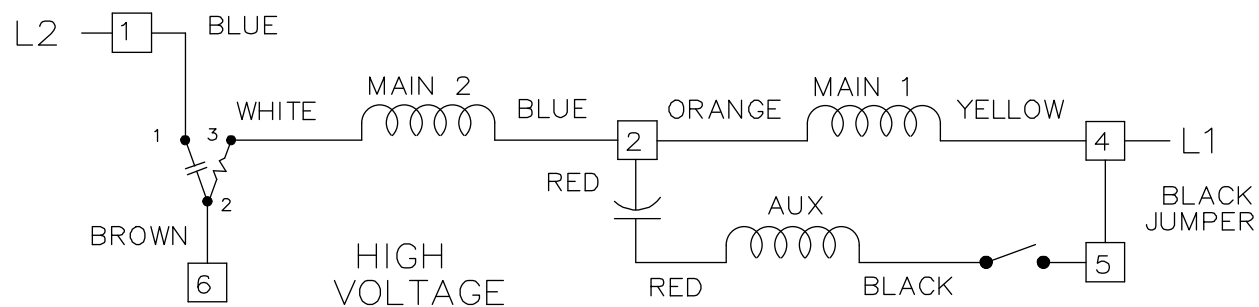
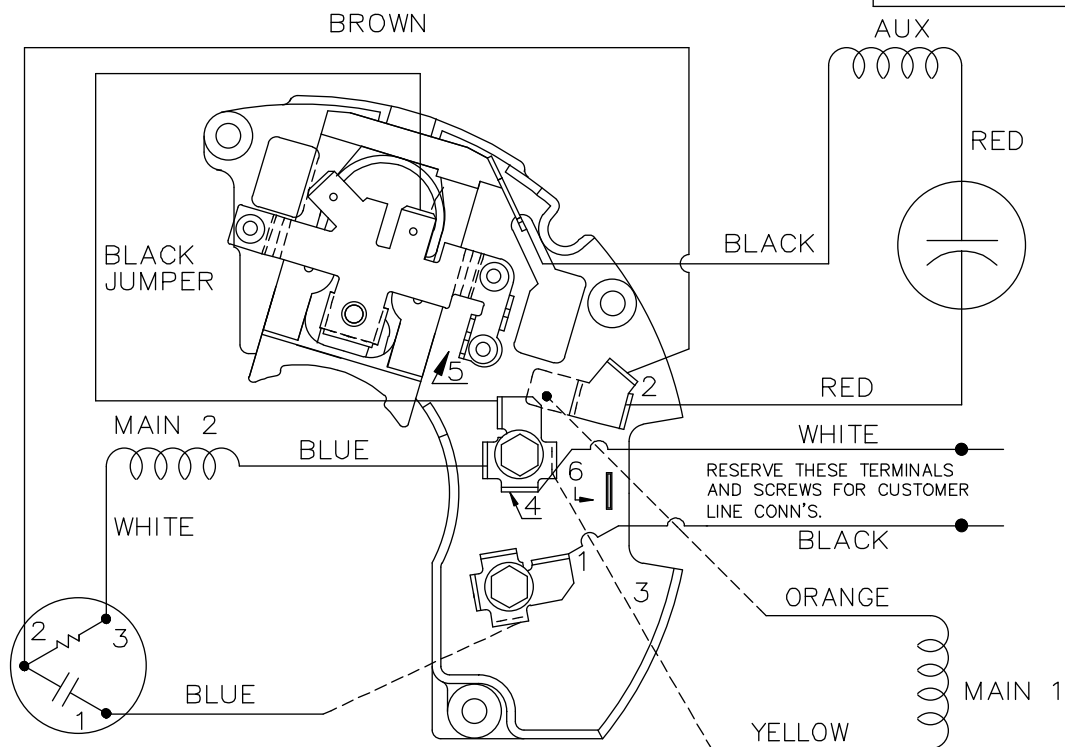


DUAL VOLTAGE CAPACITOR START
REVERSIBLE ON TERM BOARD
WITH OVERLOAD PROTECTION



HIGH
VOLTAGE




VIEWING SHAFT END

LOW VOLTAGE CW ROTATION SHOWN.

FOR HIGH VOLTAGE
CONNECT BROWN TERM 2 TO TERM 6.
CONNECT BLUE TERM 4 TO TERM 2.

TO REVERSE ROTATION EITHER
VOLTAGE INTERCHANGE RED
LEAD WITH BLACK LEAD.

				TOLERANCES UNLESS SPECIFIED		 Dayton Electric Mfg. Co. Lake Forest IL 60045 USA	DRAWN NJS 01-25-2005
				DEC.	INCHES		
				.X	± -	TITLE CONNECTION DIAGRAM 48 FR. DUAL VOLTAGE REVERSIBLE	CHK ML 01-26-2005
				.XX	± -		APPD GK 01-26-2005
2	REVISED GRAINGER ADDRESS PER ECR - 0042890	PVR 10/28/13	ST .XXX	± -		MAT'L.	SCALE 1=1
1	REVISED TO READ CW ROTATION SHOWN	NJS 02-03-2005	ML .XXXX	± -			REF EE9002M
NO.	REVISION	BY & DATE	CHK	ANG	± -	FINISH	PREV
THIS DRAWING IN DESIGN AND DETAIL IS OUR PROPERTY AND MUST NOT BE USED EXCEPT IN CONNECTION WITH OUR WORK ALL RIGHTS OF DESIGN AND INVENTION ARE RESERVED THIS IS AN ELECTRONICALLY GENERATED DOCUMENT - DO NOT SCALE THIS PRINT				RFP 01-26-2005	CAD FILE 4YU35_WD		SIZE A
				DIST WP			DRAWING NO. 4YU35-WD
						PAGE 2 OF 2	
						REV. 2	